

— Windsor —

RAPID

PRODUCT GUIDE



REDISCOVER
ADVENTURE.

INTRODUCING THE WINDSOR RAPID: REDISCOVER ADVENTURE.

The Windsor Rapid is more than just a hybrid; it's the revival of a legend. Inspired by the iconic Windsor model that ruled the roads for two decades, this new off-road hybrid brings a rugged twist to a beloved classic.

Built for adventurers who refuse to be confined by ordinary roads, the Windsor Rapid combines the heritage of its predecessor with cutting-edge engineering and modern comforts. From tackling rugged trails to exploring untouched landscapes, this hybrid is your ultimate ticket to boundless travel and unforgettable experiences.

Designed with precision, durability, and comfort in mind, the Windsor Rapid is a tribute to its legendary name while redefining freedom for today's explorers.

The spirit of adventure is calling. Experience the Windsor Rapid and create your own legacy.

EXPAND YOUR HORIZONS. EMBRACE THE THRILL OF THE UNKNOWN.

Designed to set a new benchmark in off-road adventure, the Windsor Rapid series offers a versatile range of premium hybrid caravans tailored for solo adventurers, couples, and families.

FEATURES



SLEEPS 2-4
PERSONS



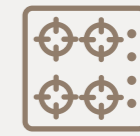
FULLY
OFF-ROAD



SOLAR PANELS
WITH BMS



AIR CONDITIONER
& DIESEL HEATER



EXTERNAL
KITCHEN



HOT DIP
GALVANIZED
CHASSIS

RAPID 13

COUPLES
MODEL



RAPID 15D

COUPLES
MODEL

FAMILY
MODEL



RAPID 15B

FAMILY
MODEL

BUNK
BEDS



EXTERIOR FEATURES.

The Windsor Rapid series is packed with rugged features designed for off-road and off-grid adventures. Enjoy enhanced traction, durability and protection on all of your travels.



ALUMINIUM CHECKER PLATE STONE PROTECTION

To shield the front and side walls from debris and rugged terrain.



SOLAR POWER WITH REGULATOR

Harness reliable off-grid power for extended adventures.



BUILT FOR TOUGH TERRAIN

Equipped with 16-inch alloy wheels and Goodride Mud Terrain tyres to ensure stability and strength wherever you roam.



OFF-ROAD READY

Conquer rugged terrain with adjustable independent coil spring suspension featuring twin shock absorbers, a hot-dipped galvanised steel chassis, and a tough Raptor-coated underbody for superior durability.



EXTERNAL KITCHEN

With a 4-burner cooktop, you can enjoy delicious meals outdoors with ease and convenience.

INTERIOR FEATURES.

Comfortable living meets smart design with the Windsor Rapid series. Clever layouts, a shower/toilet combo, and a King bed combine to produce your new home away from home.



KITCHENETTE WITH SEPARATE DINETTE

Enjoy a functional space for cooking meals and relaxing together. 15D model only.



BENCHTOPS & AMPLE STORAGE

Thoughtfully designed to keep your essentials organised and your workspace clutter-free.



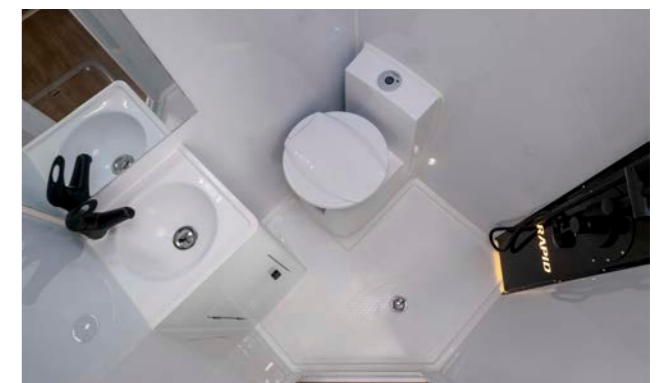
AIR CONDITIONER & DIESEL HEATER

Stay cosy in winter and cool in summer, no matter where your travels take you.



KING BED WITH LAYOUT OPTIONS

Enjoy the comfort of a king-size bed, with flexible layouts including optional single bunks or a single bed/dinette conversion to suit your needs.



GENEROUSLY SIZED ENSUITE

Experience home-like comfort with plenty of room for freshening up on the road.

RANGE FEATURES

CHASSIS

- ▶ Hot-dipped galvanised steel chassis with underbody Raptor coating
- ▶ Adjustable independent coil spring suspension with twin shock absorbers
- ▶ Cruisemaster DO35 all-terrain pin coupling
- ▶ 16" alloy wheels with Goodride Mud-Terrain tyres
- ▶ Fold-down rear bar with spare wheel mounts with 2 spare wheels
- ▶ 12" Electric drum brakes with hand brake
- ▶ 4x Heavy duty stabiliser legs
- ▶ Chassis rails with plate reinforcement
- ▶ Drawbar with plate reinforcement
- ▶ Steel suspension arms

CONSTRUCTION

- ▶ Exterior Finish: Aluminium composite 3mm panel
- ▶ Stone Protection: Aluminium checkerplate on front & side wall panels
- ▶ Insulation: Polystyrene
- ▶ Frame: Precision-welded etched aluminium
- ▶ Roof & side walls: Aluminium frame with aluminium composite panel
- ▶ Floor: 12mm 'honeycomb' composite panel

APPLIANCES

- ▶ 12V Fan mounted to sleeping area
- ▶ Reverse cycle roof top air conditioner
- ▶ Diesel air heater
- ▶ Water heater

POWER & ELECTRICS

- ▶ 6x 100W Solar panel with regulator (5x panels in Rapid 13 model)
- ▶ 2x 135Ah Lithium-Ion Phosphate batteries
- ▶ Renogy power management
- ▶ Renogy monitoring system
- ▶ Renogy 2000W Pure Sine Wave Inverter
- ▶ Renogy charger with dual input DC-DC with MPPT 12V 30Amp

EXTERNAL FEATURES

- ▶ Awning: manual wind-out cassette style 10' (3.0x2.5m)
- ▶ 2x 120L Fresh water tank
- ▶ 1x 70L Grey water tank
- ▶ 2x 9kg Gas cylinders mounted with storage lockers
- ▶ Antenna
- ▶ 2x 6.5-inch External speakers
- ▶ External shower with hot & cold supply
- ▶ 12V USB charge outlet
- ▶ 7-Pin trailer plug
- ▶ Front storage tray with U-Dek protection
- ▶ Large Fridge Slide

KITCHEN & PLUMBING

- ▶ Internal kitchenette with 2-burner stove
- ▶ Dinette with adjustable table
- ▶ External kitchen with 4-burner cooktop with gas bayonet fitting to service slide-out kitchen
- ▶ Kitchenette style cabinet with enclosed cupboards and drawers
- ▶ Stainless steel kitchen sink with fold-down tempered glass lid and black tapware

BEDROOM

- ▶ King Bed with innerspring mattress
- ▶ 2x Bunk beds (Rapid 15B model only)
- ▶ Dinette to bed conversion (Rapid 15D model only)

ENSUITE

- ▶ One-piece moulded cubical with non-slip floor, corner mounted shower mixer
- ▶ 18L cassette toilet with electric flush
- ▶ Roof hatch with 12V fan above shower

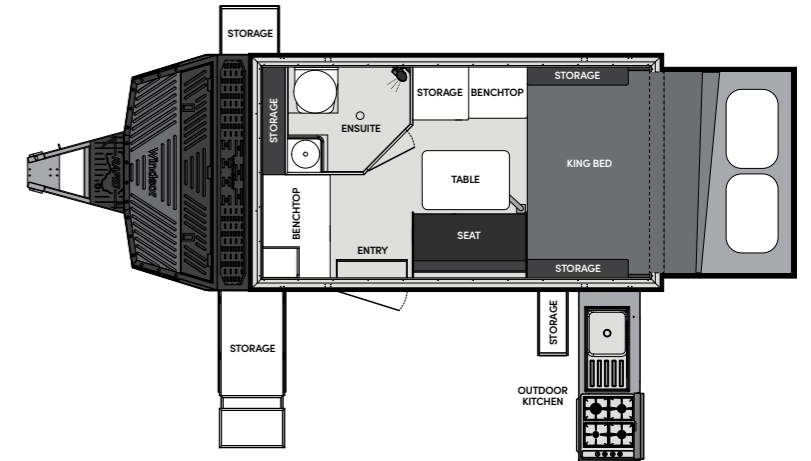
WARRANTIES

- ▶ 3 year warranty - Structural Components
- ▶ 3 year warranty - Suspension, Drawbar and Chassis
- ▶ 1 year warranty - Tent and Canvas Components

SPECIFICATIONS

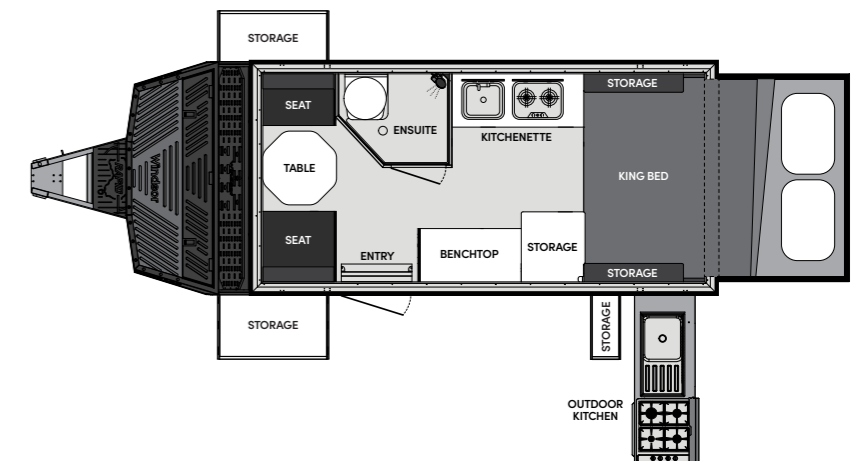
RAPID 13

Berth (People)	2
Travel Length (mm) - closed	6400
Overall Length (mm) - open	7000
Overall Width (mm)	2200
Overall Height (mm)	2460
Interior Height (mm)	2010
ATM Weight (kg)	2990*
Tare Weight (kg)	2250*
Towball Tare Weight (kg)	230*



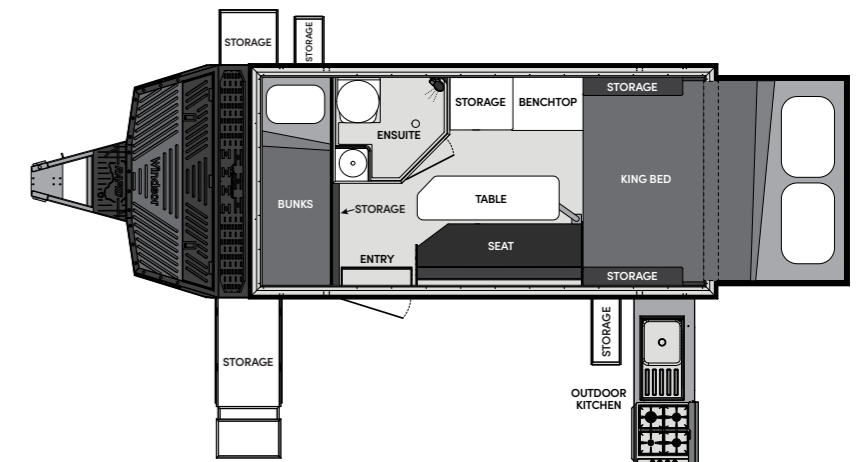
RAPID 15D

Berth (People)	3
Travel Length (mm) - closed	6940
Overall Length (mm) - open	7540
Overall Width (mm)	2220
Overall Height (mm)	2460
Interior Height (mm)	2010
ATM Weight (kg)	2990*
Tare Weight (kg)	2450*
Towball Tare Weight (kg)	240*



RAPID 15B

Berth (People)	4
Travel Length (mm) - closed	6940
Overall Length (mm) - open	7540
Overall Width (mm)	2220
Overall Height (mm)	2460
Interior Height (mm)	2010
ATM Weight (kg)	2990*
Tare Weight (kg)	2450*
Towball Tare Weight (kg)	240*



*Weights & measurements are indicative only

discover, **the**
WINDSOR **way**

Windsor

windsorrvs.com.au



[windsorrvs_au](https://www.instagram.com/windsorrvs_au)



[WindsorRVsAU](https://www.facebook.com/WindsorRVsAU)