

Goldstream RV.

CAMPER

PRODUCT RANGE



STORM RL OFFROAD

A group of people are gathered around a campfire at night, sitting on the ground and chairs. They are illuminated by the warm glow of the fire. In the background, a large, gnarled tree with thick branches stands prominently. The scene is set outdoors, with a body of water visible in the distance, reflecting the light from the fire and the tree. The sky is a deep blue, suggesting twilight or early night. The overall atmosphere is peaceful and adventurous.

TAKING YOU PLACES
NEVER BEFORE EXPLORED

Since 1993, Goldstream RV have been providing couples and families with quality Australian Made vans that will take you further in discovering the beauty and vastness of our great country. Now more than ever, we continue to strengthen our commitment to our customers, our brand, our people and our product, drawing on over 28 years' experience to bring you the best in quality and reliability. So whether you're traversing our rugged outback tracks, cruising the coast or simply spending quality time with family and friends in a caravan park, you can rest assured knowing you have invested in a van made right here using the highest quality materials and with the latest designs, styling and technology. Our reputation has grown to what it is today from this solid background, with many of our owners going on to be repeat customers, safe in the knowledge they are buying a van with great resale value.

Welcome to the Goldstream RV Camper Trailer range, your world of adventure starts here.



STORM RL OFFROAD



WING 3 ST PREMIUM



CROWN ST PREMIUM



THUNDER PREMIUM

STORM

The Storm is the largest Camper Trailer in our line-up and is designed to provide space for all the family. It has been our leading camper for well over 25 years and there is good reason it continues to be a top choice.

Once you step inside you immediately get the sense of space and openness, unzip the immense windows and feel at one alongside nature with a full 360 degree view plus the protection of flyscreens throughout, but if it's some privacy you want then simply close the 100% blackout curtains.

Cook up a storm for the family with it's huge internal kitchen with 4 burner stove and grill, stainless steel sink with 12 volt pump and large 3 way fridge. There's also plenty of bench space, sitting higher than all other campers on the market. Internal space has been maximised, with numerous large storage drawers and cupboards with shelving throughout. If you are wanting additional storage it's easy to add overhead storage with the Sky Track profile installed to every Camper roof.

The club lounge seating areas are big enough to seat a family comfortably and are the perfect spot for family meals or a board game while the expansive bench and cupboard space makes the Storm models a great family choice. On the outside, the Storm Camper models have roll-out stoves as standard great for a quick meal stop along the way, a large front storage boot and a side opening access door ideal for storing additional items.



Storm RL kitchen



4 burner stove & grill



3 way fridge



Roll out stove



IMAGE: TOURISM AUSTRALIA

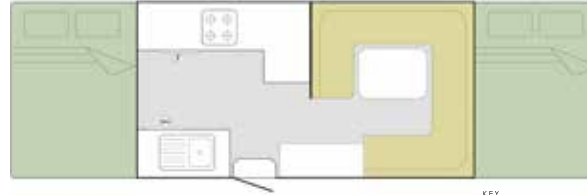


STORM



KEY
 FRIDGE
 MICROWAVE

STORM LTD



KEY
 FRIDGE
 MICROWAVE

STORM RL



KEY
 FRIDGE
 MICROWAVE



INTERNAL STANDARD FEATURES

- 4-Burner Stove & Grill
- 91L 3-Way Fridge
- Microwave oven
- Stainless Steel Sink & 12-Volt Pump
- 1 x Queen Size Bed / 1 x Double Size Bed
- Ezy Slide Bed on Rollers
- 15mm Ply Furniture
- Fully Recessed Door Furniture
- Large Drawers on Bearing Slides
- Table to Bed Converter
- Heavy Duty Upholstery
- Ezy Glide Blockout Curtains
- 12-Volt LED Roof Lights
- 12-Volt Bed Lights
- Water Tank Gauge and Odysseylink App

EXTERNAL STANDARD FEATURES

- 14" White Steel Wheels
- Duragal Chassis with Beam Axle
- 50mm Ball Coupling
- Composite Walls
- 9kg Gas Bottle
- Drop Down Stabilisers
- External Access Door
- Mains Pressure Reducer
- 100amp Battery Mounted to Chassis
- One-Piece Roof
- BP35SI Battery Management System with RV View Display
- ABS Rear Body Mould
- Built-In Step
- Front Locking Boot
- Spare wheel on Bumper Bar
- 59L Water Tank
- Water Tank Protection
- Roll-Out Stove

WEIGHTS & MEASUREMENTS

	STORM & LTD	STORM RL
Travel Length	6100mm	6000mm
Body Length	4600mm	4500mm
Width	2130mm	2130mm
Travel Height	1610mm	1610mm
Open Length	6850mm	6750mm
Tare (Approx.)	1465kg	1450kg
Ball Weight (Approx.)	160kg	145kg

Heights and weights will vary depending on the package chosen. The above should be used as a guide only and are based on on-road models. Please check with your selling dealer for further information. Photos may contain optional extras that are not included. Please check all inclusions when obtaining quote.

STORM OFFROAD



Wing 3 ST king bed



Wing 3 ST combo shower/toilet



Wing 2RL interior



Wing 3 interior

WING

The Wing is where it all began over twenty eight years ago now and yet it's still a favourite! With 3 different layouts rounding out the range, there's sure to be one to suit your family's needs. The Wing 3 layout is designed for the largest of families and comprises of a huge club lounge at the front, a large table and dinette area and a spacious kitchen which runs down the side of the camper. The Wing 3 will sleep 6 with ease and even more with the optional club lounge table at the front.

Our Wing 3 ST has all your comforts covered and is the most luxurious layout including an internal shower cubicle and toilet complete with hand basin, perfect for free camping and complying with increasing self-sufficiency requirements of many national parks across the country. The front of the Camper has a large L shaped seating area and a dinette seat opposite the table. The kitchen offers generous bench and preparation space and comes with 91L fridge, 4-burner stove and sink. This Camper is perfect for a family holiday with all the conveniences.

Wing 2 RL is our smallest body Camper Trailer, but big on useable space. With a size suited to modern garage storage capabilities this model is surprisingly large on the inside, with a large seating table area that will comfortably seat 4 people with ease. Plenty of storage under seats and a large size kitchen with more cupboard and bench space than anything else on the market in its size. Preparing meals will be a dream, it may look compact but it's big on design and floor space. Again the Sky Track profile has been added to all models to allow easy additional overhead storage to be added.



IMAGE: TOURISM AUSTRALIA



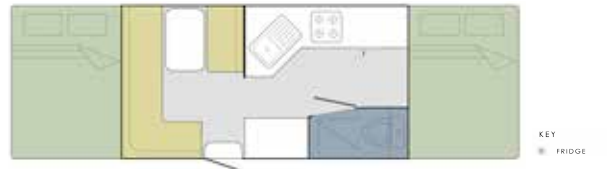
WING 2 RL



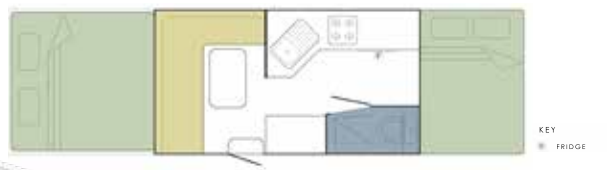
WING 3



WING 3 ST



WING 3 ST KING



This layout includes a 4 way table slide upgrade



INTERNAL STANDARD FEATURES

- 4-Burner Stove & Grill
- 91L 3-Way Fridge
- Microwave oven (except Wing 3 ST & Wing 3 ST King Bed)
- Stainless Steel Sink & 12-Volt Pump
- 1 x Queen Size Bed / 1 x Double Size Bed
- Ezy Slide Bed on Rollers
- Fully Recessed Door Furniture
- 15mm Ply Furniture
- Large Drawers on Bearing Slides
- Table to Bed Converter
- Ezy Glide Blockout Curtains
- 12-Volt LED Roof Lights
- 12-Volt Bed Lights
- Combination Shower/ Toilet (Wing 3 ST only)
- Gas Hot Water Service (Wing 3 ST only)
- Water Tank Gauge and Odysseylink App

EXTERNAL STANDARD FEATURES

- 14" White Steel Wheels
- Duragal Chassis with Beam Axle
- 50mm Ball Coupling
- Composite Walls
- 9kg Gas Bottle (2 x 9kg on Wing 3 ST)
- Drop Down Stabilisers
- External Access Door
- Mains Pressure Reducer
- 100amp Battery Mounted to Chassis
- One-Piece Roof
- BP35SI Battery Management System with RV View Display
- ABS Rear Body Mould
- Built-In Step
- Front Locking Boot
- Spare wheel on Bumper Bar
- 59L Water Tank (2 x 59L on Wing 3 ST)
- Water Tank Protection

WEIGHTS & MEASUREMENTS

	WING 3	WING 3 ST	WING 2 RL
Travel Length	6000mm	6000mm	5200mm
Body Length	4600mm	4600mm	3800mm
Width	2130mm	2130mm	2130mm
Travel Height	1610mm	1610mm	1610mm
Open Length	6850mm	6850mm	6050mm
Tare (Approx.)	1300kg	1350kg	1230kg
Ball Weight (Approx.)	140kg	140kg	150kg

Heights and weights will vary depending on the package chosen. The above should be used as a guide only and are based on on-road models. Please check with your selling dealer for further information. Photos may contain optional extras that are not included. Please check all inclusions when obtaining quote.

WING 2 RL

CROWN

The Crown Camper Trailer is all about convenience, suited to 1-2 travellers, it can be set up within minutes and is easy and light weight to tow. We have 2 very different internal layouts in the Crown depending on your needs.

Our Crown model offers a large café lounge seating area at the rear providing ample room for 4 adults and will easily convert to a double bed by dropping the table if needed. It has a large kitchen running down the driver's side of the van and comes complete with 91L fridge, sink, microwave oven, 4-burner grill plus plenty of cupboard and bench space. Above the front bed is a large 3-door overhead cupboard providing loads of additional storage space. The bed frame lifts up on gas struts to reveal more storage underneath. There is also an external access door which gives easy access to items that need to be got at quickly.

Our Crown ST model has generous seating for 2 people in the L-shape lounge located near the door, a large kitchen and loads of bench space. It has the same lift up bed and overhead cupboard as the Crown. In addition, the ST model features an internal shower and toilet providing the latest in self-sufficiency and convenience, whilst still taking only minutes to set up. It also comes with 2 x 9kg gas bottles and 2 x 59L water tanks along with a gas hot water service as standard to provide plenty of hot water to the shower and sink.



Crown ST internal bed & dining



4 burner stove & grill



Crown ST combo shower/toilet



Crown ST rear & bumper



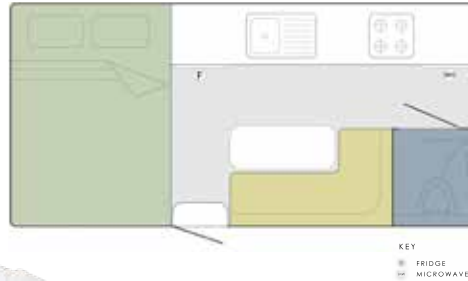
IMAGE: TOURISM.AUSTRALIA



CROWN



CROWN ST



INTERNAL STANDARD FEATURES

- 4-Burner Grill
- 91L 3-Way Fridge
- Microwave oven
- Stainless Steel Sink & 12-Volt Pump
- Fully Recessed Door Furniture
- Large Drawers on Bearing Slides
- Table to Bed Converter (Except Crown ST)
- Front Queen Size Bed
- 15mm Ply Furniture
- Ezy Glide Blockout Curtains
- 12-Volt LED Roof Lights
- Combination Shower/Toilet (Crown ST only)
- Gas Hot Water Service (Crown ST only)
- Water Tank Gauge and Odysseylink App

EXTERNAL STANDARD FEATURES

- 14" White Steel Wheels
- Duragal Chassis with Beam Axle
- 50mm Ball Coupling
- Composite Walls
- 9kg Gas Bottle (2 x 9kg on Crown ST)
- Drop Down Stabilisers
- Built-In Step
- External Access Door
- Mains Pressure Reducer
- 100amp Battery Mounted to Chassis
- One-Piece Roof
- BP35SI Battery Management System with RV View Display
- ABS Rear Body Mould
- External Access Door to Storage Under Bed
- Front Locking Boot
- Spare wheel on Bumper Bar
- 59L Water Tank (2 x 59L on Crown ST)
- Water Tank Protection

WEIGHTS & MEASUREMENTS

	CROWN	CROWN ST
Travel Length	6000mm	6100mm
Body Length	4500mm	4600mm
Width	2130mm	2130mm
Travel Height	1610mm	1610mm
Open Length	4500mm	4600mm
Tare (Approx.)	1250kg	1380kg
Ball Weight (Approx.)	125kg	110kg

Heights and weights will vary depending on the package chosen. The above should be used as a guide only and are based on on-road models. Please check with your selling dealer for further information. Photos may contain optional extras that are not included. Please check all inclusions when obtaining quote.

CROWN ST

THUNDER

The Thunder model was designed to make the most of open-air living, so if you long to spend maximum time enjoying the great outdoors this is the Camper Trailer for you! The Thunder is very different from our other Camper models in that all the cooking is completely external, with a slide-out kitchen featuring a 3-burner stove and sink complimented by a picnic table with large external pantry. On the inside a 91L 3-way fridge sits neatly out of the way towards the rear of the camper. With the kitchen relocated to the great outdoors the internal space in the Thunder is something to behold!

The Thunder is designed to sleep 5 people with ease, a separate queen bed at the rear and a double bed at the front, alongside the seating area. The front section of the lounge is extra deep to accommodate the slide out kitchen stored beneath it, not only does this make a luxurious place to relax, it also doubles nicely as an additional sleeping area without the need for a drop down table. Making it a more practical everyday solution for families. Opposite this seating area is another return seat backing up to the bench space with the table nestled in between. This area will comfortably seat 5 adults.



Thunder interior



Thunder interior



Thunder picnic table & pantry



Large Dometic slide out kitchen



IMAGE: TOURISM AUSTRALIA

THUNDER



KEY
 FRIDGE
 MICROWAVE



THUNDER PREMIUM

INTERNAL STANDARD FEATURES

- 91L 3-Way Fridge
- Microwave oven
- Ezy Slide Bed on Rollers
- Fully Recessed Door Furniture
- 1 x Queen Size Bed / 1 x Double Size Bed
- Ezy Glide Blockout Curtains
- Large Drawers on Bearing Slides
- 15mm Ply Furniture
- 12-Volt LED Roof Lights
- 12-Volt Bed Lights
- Water Tank Gauge and Odysseylink App

EXTERNAL STANDARD FEATURES

- 14" White Steel Wheels
- Duragal Chassis with Beam Axle
- 50mm Ball Coupling
- Composite Walls
- 9kg Gas Bottle
- Drop Down Stabilisers
- External Access Door
- Mains Pressure Reducer
- One-Piece Roof
- 100amp Battery Mounted to Chassis
- BP35SI Battery Management System with RV View Display
- ABS Rear Body Mould
- Built-In Step
- Front Locking Boot
- Spare wheel on Bumper Bar
- Dometic Slide out Kitchen with Sink and 3 burner stove
- Gas Bayonet Fitting
- 12-Volt Pump to Sink
- Picnic Table opening to an Outside Pantry
- 59L Water Tank
- Water Tank Protection

WEIGHTS & MEASUREMENTS

	THUNDER
Travel Length	6100mm
Body Length	4600mm
Width	2130mm
Travel Height	1610mm
Open Length	6850mm
Tare (Approx.)	1450kg
Ball Weight (Approx.)	160kg

Heights and weights will vary depending on the package chosen. The above should be used as a guide only and are based on on-road models. Please check with your selling dealer for further information. Photos may contain optional extras that are not included. Please check all inclusions when obtaining quote.

OPTIONAL UPGRADES



INTERNAL OPTIONS AVAILABLE

- High Gloss Furniture
- Radio/CD
- 12-Volt Points
- Oven
- Drawer under seats
- Compressor Fridge
- King and Queen Bed Upgrades
- Innerspring Mattresses
- Breakfast Bar
- Child Bunk Net
- Sky Tracks

EXTERNAL OPTIONS AVAILABLE

- Coil Independent Suspension
- Dual Batteries
- Stone Guard
- Solar Panel
- Picnic Table
- Choice of Checker Plate colours
- Roof Air Conditioner
- Awnings
- Bed Flies
- Off Road Hitches
- Alloy Wheels
- BBQ
- Air Bag Suspension
- Outside Shower
- Jerry Can Holders

ADVENTURE PACKAGE

THIS PACKAGE IS AVAILABLE ON ALL MODELS

The Adventure Package sits between our On Road and Off Road models, and is well suited for towing by the expanding SUV range of vehicles on the market without having to go to a full offroad van. Enjoy the freedom of venturing off the tar, or even enjoying some free camping with the package now including Solar. As the model range suggests it's all about the Adventure.

PACKAGE INCLUDES:

- Adventure Pack 6" Chassis with ALKO 2300 ATM Cross Country Coil Suspension
- 50mm Ball Coupling,
- 235/75R15 Alloy Wheels & Tyres
- 85w Solar Panel
- 12 volt External Point
- Silver Checker Plate Front & Sides
- Breakfast Bar
- Bag Flies with Mesh Sides (Crown STD Flies)

OFF ROAD PACKAGE

THIS PACKAGE IS AVAILABLE ON ALL MODELS

This Package is designed for those wanting a no fuss Offroad Package. With many years of manufacturing experience our offroad models have been well proven to cope with Australia's road conditions and to get you further in exploring what this country has to offer. The Package has been further enhanced to now include Solar amongst other inclusions.

PACKAGE INCLUDES:

- Offroad Chassis with ALKO Enduro 2500 ATM (2000 GTM) Coil Independent Suspension
- D035 Offroad Hitch
- 265/75R16 Alloy Wheels & Tyres
- 135w Solar Panel
- 12 volt External Point
- Silver Checker Plate Front & Sides
- Breakfast Bar
- Bag Flies with Mesh Sides (Crown STD Flies)

PREMIUM PACKAGE

THIS PACKAGE IS AVAILABLE ON ALL MODELS

As the name suggests our Premium Package is designed for those that want and appreciate the best! Built on our Offroad package but also including our most popular add ons bundled into a great value package, our new Premium Package has even more included to make the most of your next camping experience.

PACKAGE INCLUDES:

Offroad Package inclusions PLUS:

- Deluxe Stoneguard with Mudflaps
- Breakaway Switch
- Upgraded 170w solar panel
- Internal 12v Point/USB Combo
- 2x9kg Gas Bottles
- Change-over Gas Regulator
- 2xWater Tanks
- Radio/CD package
- 2xOpen Style Jerry Can Holders
- Fiamma Awning
- 2x Queen bed Upgrade (N/A Wing 2 RL model, Crown model innerspring mattress in lieu)
- Picnic Table
- Provision for Air-Con
- Gas Bayonet Fitting
- Bed Lights with Fan (N/A Crown model)
- External 12v Point/USB Combo
- Choice of Checker Plate colours



DEALER STAMP:

DISCLAIMER: GOLDSTREAM RV PRODUCTS ARE COVERED BY A 12 MONTH WARRANTY. DUE TO CONSTANT IMPROVEMENTS, PRODUCT SPECIFICATIONS ARE SUBJECT TO CHANGE.

IMAGE: TOURISM AUSTRALIA



PROUDLY ASSOCIATED WITH THESE INDUSTRY PARTNERS



With you all the way
WWW.GOLDSTREAMRV.COM.AU